



heat tracing specialists

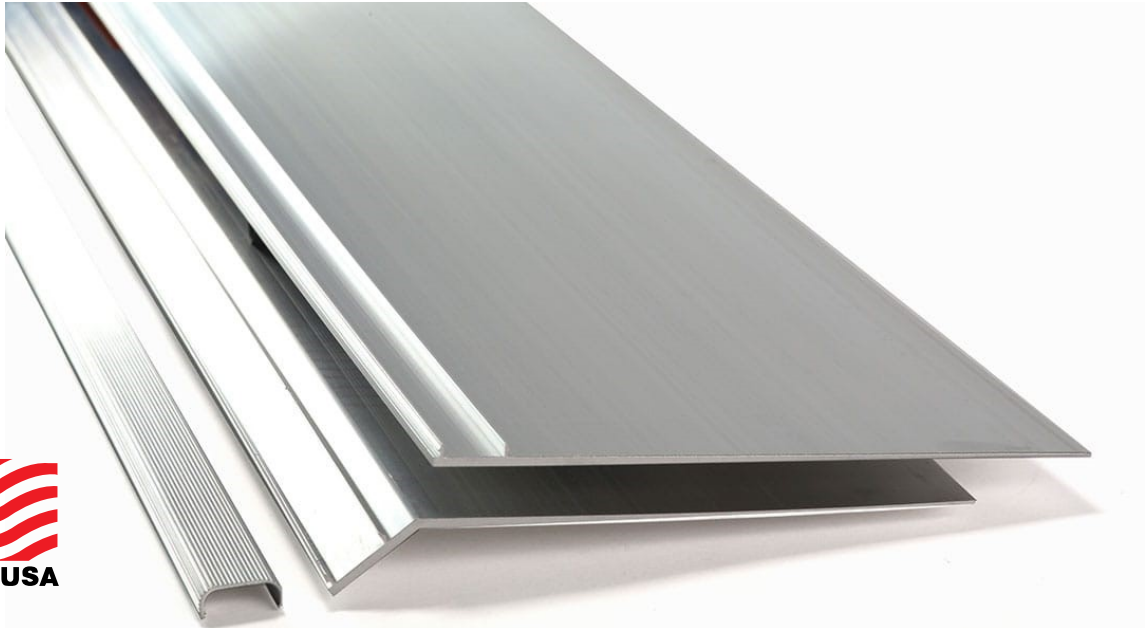
106 Twin Terrace Way
Spring Branch, Texas 78070-6288

Phone: 830-438-3808
Email: sales@trans-heat.com
Web: trans-heat.com

Romans 10:11 For whosoever believes on Him shall not be ashamed.

Hot Flash HEATED FLASHING

Accessories



Hot Flash is an aluminum flashing designed to be used as a heat conductive flashing for removal of snow and ice dams on roofs. It is an aesthetic, efficient, alternative to traditional forms of roof & gutter trace. Hot Flash is intended for use with industrial grade cables and NOT contractor/residential grade cables and imports with cheap dielectrics, such as PVC.

Hot Flash works by evenly conducting heat underneath the roof shingles or metal roofing to melt snow and ice and ensure proper drainage. It is completely invisible; maintains the roof's natural appearance and yet, provides huge energy savings over traditional methods. (Check with local providers for available rebates and lower insurance premiums.) Hot Flash reduces overall costs significantly because it requires less cable and is protected from wind and storm damage. When used with snow melt controls, Hot Flash will provide years of maintenance free protection for homes and businesses.

Hot Flash is an excellent choice for residential and commercial locations such as homes, apartments, condominiums, resorts, hotels, retail, manufacturing, etc. It can be installed with screws, nails or appropriate adhesives.

* Hot Flash can be ordered with a 6 mil urethane membrane applied to help prevent galvanic oxidation or corrosion when in contact with dissimilar metals.

- 4 Ft. (1.2m) aluminum flashing w/ cap
- 5-1/2" width (14cm) installed under roofing material
- Exposed cap width 3/4" (1.9cm) can be painted to match roof
- 6 mil urethane membrane for use with steel roofs
- 2.7 Lbs./4 Ft. (1.22kg)

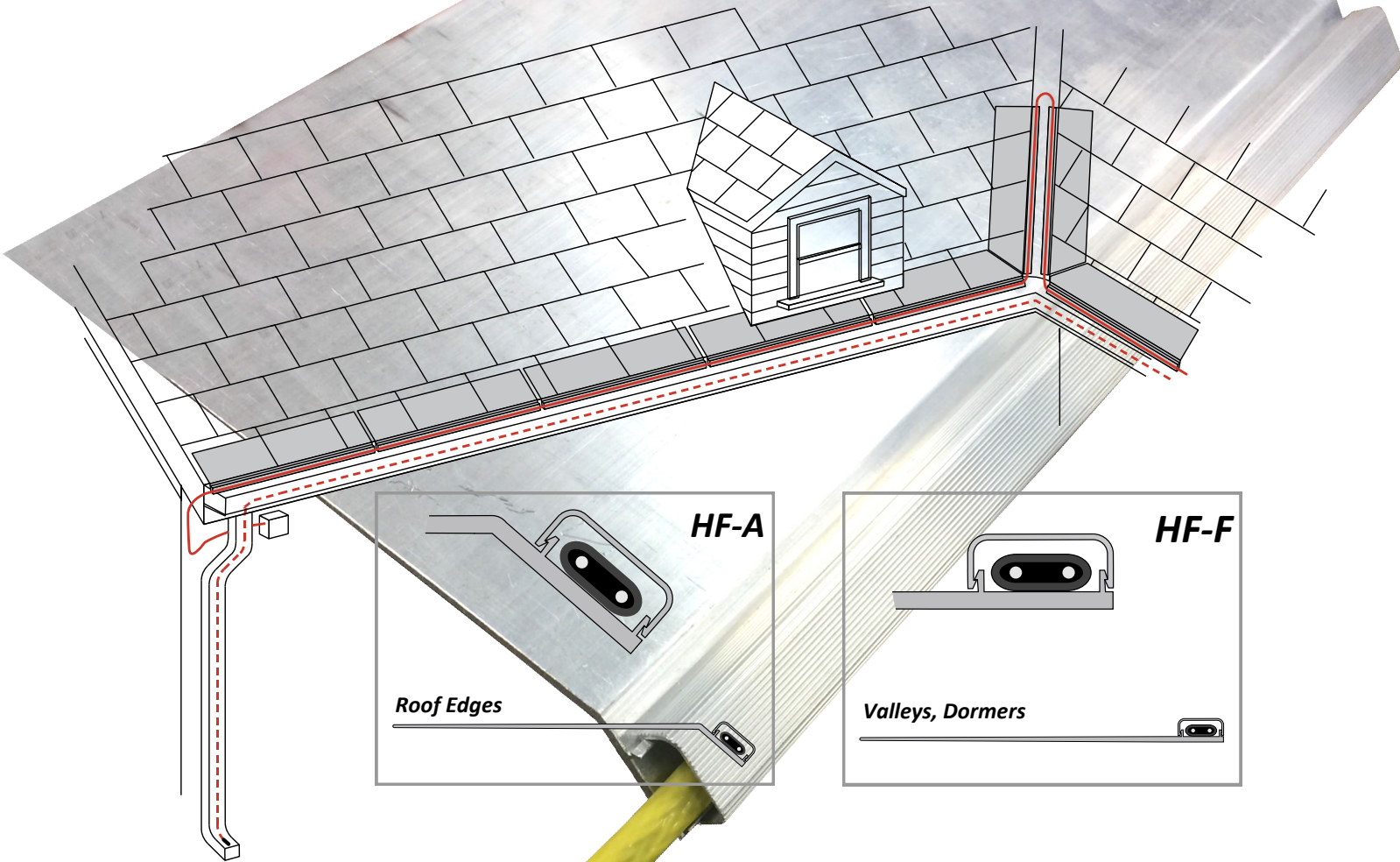
- Residential Buildings (i.e. Homes, Condos, Apartments)
- Resorts, Hotels, Camps, Marinas
- Commercial (Banks, Retail, Medical, Grocery, etc.)
- Agricultural Locations (Stalls, Barns, etc.)
- Industrial Buildings (Warehouse, Manufacturing)
- Government (Federal, Military, Courthouses, Police)

SPECS

APPLICATIONS

- 4 Ft. tapered aluminum flashing w/ cap
- Flat & angled versions to suit any requirement
- For use with T-H self-regulating or constant wattage
- Provides a protective housing for cable
- Significantly reduces heating cable requirements
- Quick, easy installation
- Cut-to-length
- For new & existing roofs

- Aesthetically pleasing; discrete
- Will not allow heating cable to melt or overheat
- Extremely energy efficient when used with controls
- Holds up under extreme conditions
- Roofing provides protective layer against storm damage
- Engineered & made in North America
- Weatherization incentives available in certain states



⚠ To minimize the danger of fire from sustained electrical arcing if the heating cable is damaged or improperly installed, and to comply with **National Electric Code (NEC) Article 427.22** requirements, agency certifications, and local codes, ground-fault equipment protection **must** be used on each heating cable branch circuit. Arcing may not be stopped by conventional circuit protection. Ground fault protection is the responsibility of the end user and should be installed by a certified electrician.

Example Configuration	HF-F		
Hot Flash	Orientation	Urethane Coating*	Weight/4 Ft.
	F=Flat	S=Steel Roof	2.7 Lbs.
	A=Angled		2.7 Lbs.

* 6 mil urethane membrane is to help prevent galvanic oxidation or corrosion when in contact with dissimilar metals.