



heat tracing specialists

106 Twin Terrace Way
Spring Branch, Texas 78070-6288

Phone: 830-438-3808
Email: sales@trans-heat.com
Web: trans-heat.com

Romans 10:11 For whosoever believes on Him shall not be ashamed.

HTM-125 HEAT TRANSFER CEMENT



HTM-125 heat transfer cement is designed to significantly improve the heat transfer between heating medias and process lines. Heat transfer cement thermally bonds steam and electric tracers to process pipes, valves, pumps and other appendages. HTM-125 fills the air cavities that normally exist between the heat tracer and process equipment with heat conductive, thermal mastic that efficiently transfers heat through conduction to the process equipment. By replacing the normal air gaps with the heat conductive cement, the heat transfer rates are improved by up to 10 times that of convective heat transfer.

Maximum Exposure Temperature	1250°F
Minimum Application Temperature	32°F
Heat Transfer Coefficient	20-40 BTU/Hr-Ft ² °F
Water Soluble	Yes
Shelf Life	1 Year Unopened

Example Configuration	HTM-125-1	
HTM-125	Container Size	Weight
Heat Transfer Cement	1=One Gallon	13 Lbs.
	5=Five Gallon	65 Lbs.
	Q=Quart	3.5 Lbs.
	C=0.10 Gallon Cartridge	1.3 Lbs.

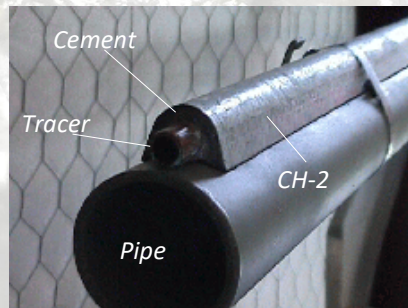
- Thermally bonds steam, fluid, and electric heat tracers to process pipes, vessels and equipment.
- With its high conductivity, significantly improves heat transfer between steam and fluid tracer tubes and process pipes.
- Provides an easy to install, cost effective alternative to jacketed piping and internal tracer systems.
- One tracer installed with HTM-125 will deliver the equivalent heat of up to four bare (no cement) tracers. With the elimination of multiple tracers, the costs to install and maintain the tracing system is greatly reduced.

CH-25	Channel for 1/4" Tracer (4' section)
CH-50	Channel for 1/2" Tracer (4' section)
CH-75	Channel for 3/4" Tracer (4' section)
SSB-1	Stainless Steel 1/2" x 0.02" Banding (823'/Roll)
SSCR-1	Stainless Crimp Seals for Banding (1,000/Box)
BT-1	Banding Tool for Stainless Steel Banding

Application Method	Tracer Sizes				
	5/16" OD	3/8" OD	1/2" OD	3/4" OD	1" OD
CH-2	26'	28'	32'	NA	
CH-3	NA		19'	NA	
Hand Trowel	52'	32'	28'	14'	9'
Flat Surface	1 Gallon = 6 ft. ² (1/4" Thick), 12 ft. ² (1/8" Thick)				



Typical hand trowel application



Optional channel reduces waste, weather protects and eliminates curing requirements

